



TURNSTYLE
DESIGNS

MADE IN ENGLAND



A MEMBER OF
AQID
ANTI-COPYING IN DESIGN

Turnstyle Designs was founded by Steve Roberts in 1992. Steve and his wife Christina work collaboratively to design some of the worlds most innovative decorative hardware. We are proudly British made and manufactured in the beautiful Devon countryside. With multiple product combinations and flexibility to allow customisation, there is something for everyone.

Brass Living



Polished Brass (PU)

Solid brass, expertly polished to a high sheen, pure and simple with nothing added to allow the natural aging process or keep it polished with any good brass cleaning products. LV-EXT



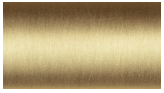
Vintage Patina (VP)

Hand polished brass base, matt treatment before patinated to a rich dark brown, lightly distressed for highlights. Finished with a durable wax coating. LV-EXT



Fine Antique Brass (FA)

Hand polished brass, lightly patinated and brushed to highlight and contrast. Finished with a durable wax coating. LV-EXT



Satin Brass (TW)

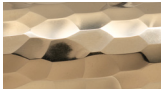
Hand polished, then wire brushed for a golden finish. Wax coated. This finish will darken with age unless kept polished. LV-INT



Vintage Nickel (VN)

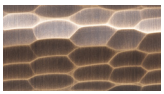
Nickel plated brass, skilfully patinated by our team of craftsmen, followed by hand distressing and wax polishing. LV-INT

Hammered Living



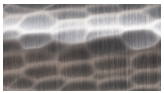
Polished Brass (PU)

Solid brass, expertly polished, then hammered and polished a second time to a high sheen, with subtle light refraction. Either allow the natural aging process or keep it polished with any good brass cleaning products. LV-EXT



Burnished Brass (BH)

For our hammered finishes we use a more gentle technique to patinate, each piece is hand burnished to break the surface before being patinated, then subtly distressed, hand polished and waxed to give a luxurious antique finish, highlighting every hammer blow perfectly. LV- EXT



Burnished Nickel (NH)

Polished solid brass, individually hammered, then nickel plated before being hand burnished, patinated and distressed to be finished with a wax finish. Eight pairs of hands before assembly, QA and packing. LV-INT

Hammered Plated



Bright Chrome (BC)

Solid brass hand polished then individually hammered, before plated with a crisp and bright chrome plating. Highly reflective hammer blow texture that is easy to maintain and our most durable finish. PL-EXT



Polished Nickel (PN)

As with Chrome, solid brass, polished, hammered and re polished before being finished with our beautifully subtle nickel plating. Clean with any quality nickel polish. PL- INT



Satin Nickel (SN)

Solid brass, polished, individually hammered and finished with a fantastic, flat satin nickel plating, no brushwork. A superbly versatile finish that will stand the test of time. PL-INT

Brass Plated



Bright Chrome (BC)

Sometimes referred to as Polished Chrome, solid brass base, highly polished, nickel base coat with a durable chrome top coat. Easy to maintain and our most durable finish. PL-EXT



Polished Nickel (PN)

Solid brass base, finished with our beautifully subtle nickel plating, silver with hints of yellow. Superb in contemporary or traditional interiors. Clean with any quality nickel polish. PL-INT



Satin Nickel (SN)

Still our most popular plated finish, solid brass with a fantastic, flat satin nickel plating, no brushwork. A superbly versatile finish that will stand the test of time. PL-INT

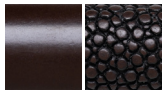


Matt Black Chrome (CB)

Our latest addition to our plated finishes, a four step process developed by our highly skilled team of finishers, this is a completely matt black plated finish. Highly durable and practical for interior or exterior use. PL-EXT

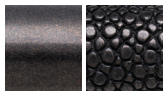
Code: LV - living finish. INT - interior use only. EXT - interior or exterior use. PL - plated finish

Amalfine™



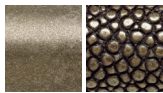
Cocoa (CO)

Dyed marble composite, plain designs reminiscent of mid century Bakelite.



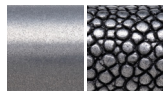
Black Bronze (BB)

Dyed marble mixed with real bronze, highly polished to bring out the bronze highlights, a rich black that will go well in any interior.



Silver Bronze (SB)

Heavily loaded cold cast bronze, highly polished and waxed to produce a rich dark golden finish.



Alupewt (AP)

A secret blend of composite metals, polished and dyed to bring out the highlights in the more detailed designs such as Shagreen.



Sand (SA)

Only available with specific designs such as Shagreen, Labyrinth, Hickory and Bullet. Dyed marble, with a dark stain to produce a highly unique finish.



Bone (BN)

Bone is made from 80% marble, very life like with variations between batches. Only applicable to non textured designs.

Button Finishes

Button finishes also available in BC, SN, PN, PU, FA



Antique Bronze (AB)

Only available on full leather cabinet handles such as Bow, Cup and Strap as button finishes.



Satin Chrome (SC)

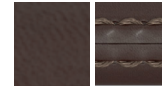
Only available on full leather cabinet handles such as Bow, Cup and Strap as button finishes.

Leather



Chestnut (CN)

A glorious, reddy, nutty brown, full of life and finished with a natural, off white thread.



Chocolate (CT)

A rich dark brown, our most popular colour, finished with a dark brown thread.



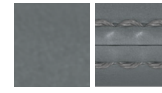
Black (BL)

A beautiful, subtle sheen, classic leather, finished with a black thread.



Tan (TA)

Light, luxurious leather, edged with a soft, natural thread.



Slate (GC)

A mid tone grey, growing in popularity, great with our silver plated finishes and edged with a silver grey thread.



White (BW)

White leather, white thread, white edging for a clean and contemporary look.

Woven Leather



Tobacco (TC)

A reddish brown mix of woven strands to produce our best selling classic.



Flint Grey (FG)

A beautiful mid grey with a subtle dark smoked undertone.



Whisky (WK)

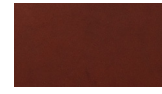
A light tan mix with dark edging.



Raven Black (RV)

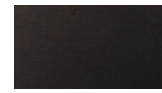
Like the bird, a beautiful reflective black sheen, that comes alive as light catches it.

Faux Leather



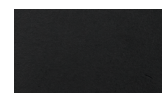
Attache Cognac (AC)

A colour match to our Chestnut Leather. Available only on flush products such as sliding door hardware, to avoid marking.



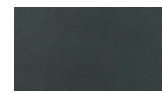
Black Tea (BT)

A colour match to our Chocolate Leather. Available only on flush products such as sliding door hardware, to avoid marking.



Finesse Black (FB)

A colour match to our Black Leather. Available only on flush products such as sliding door hardware, to avoid marking.



Destiny Storm (TS)

A colour match to our Slate Grey Leather. Available only on flush products such as sliding door hardware, to avoid marking.